

Camel and Donkey Outdoor Display Pattern a gift from Jona Giammalva

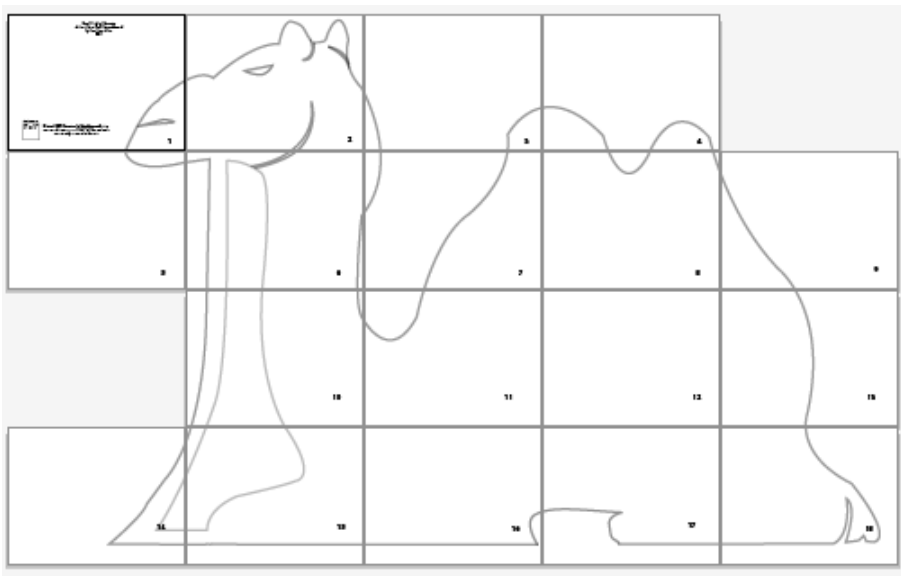


Uses a 4x4 piece of plywood for the camel and 36"x24"
plywood for the donkey.

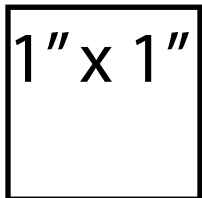
Camel Nativity Silhouette
designed for a 4' x 4' plywood board
by Jona Giammalva
2018

note: The donkey requires another piece of plywood measuring 35" x 24"

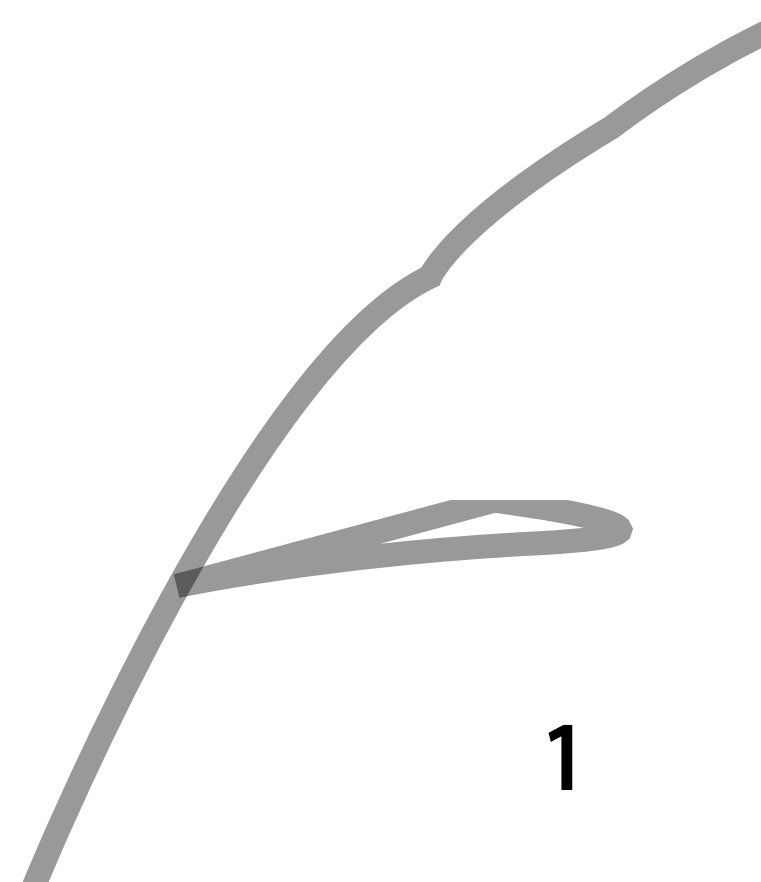
Tape together using this picture as a guide. Do not overlap your pages at all.



test square



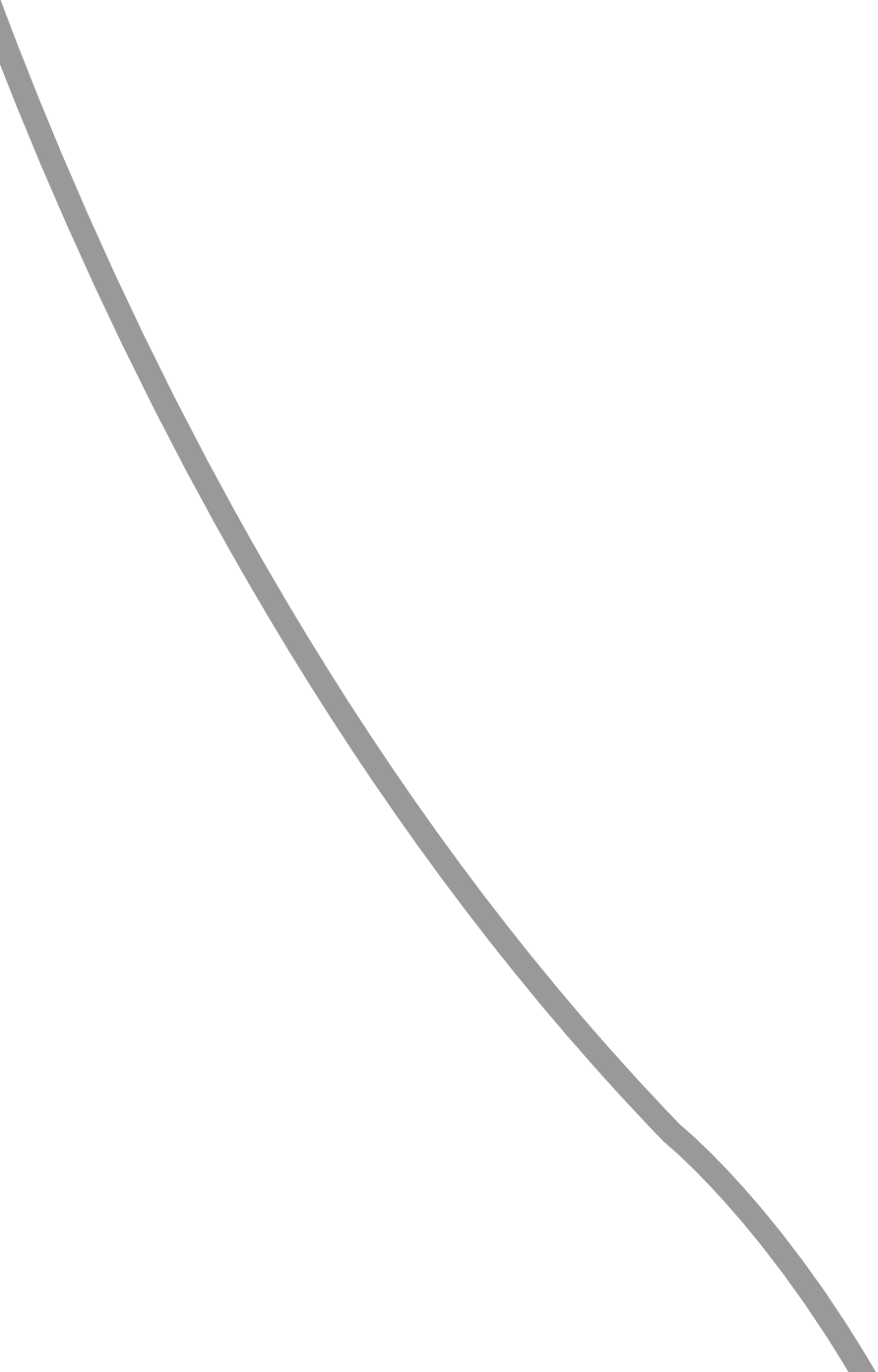
Print at 100%. Do not scale. Print this page first to measure the test square. If it's 1" x 1" the setting is correct and you can print the rest.







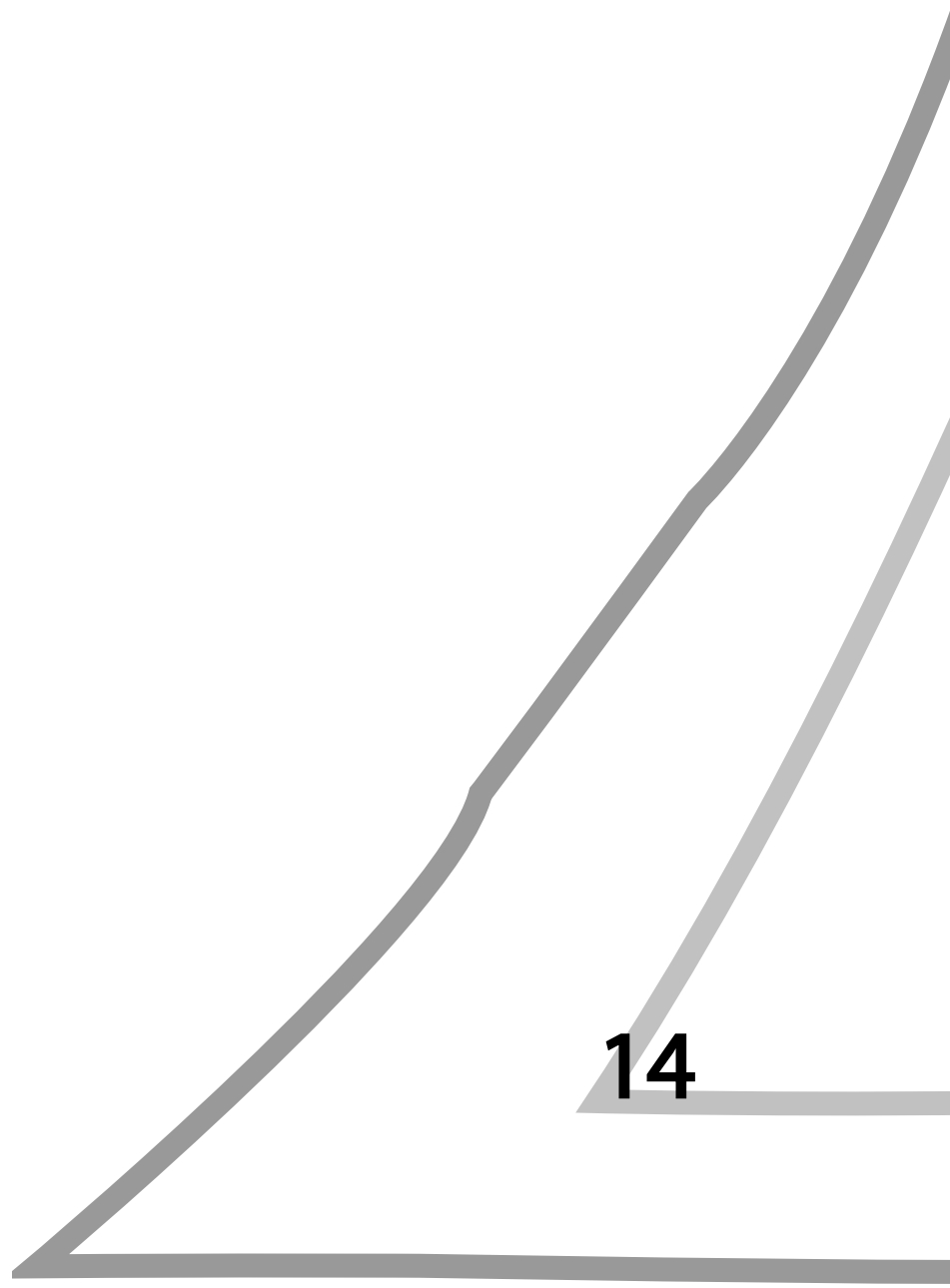
4





10





14

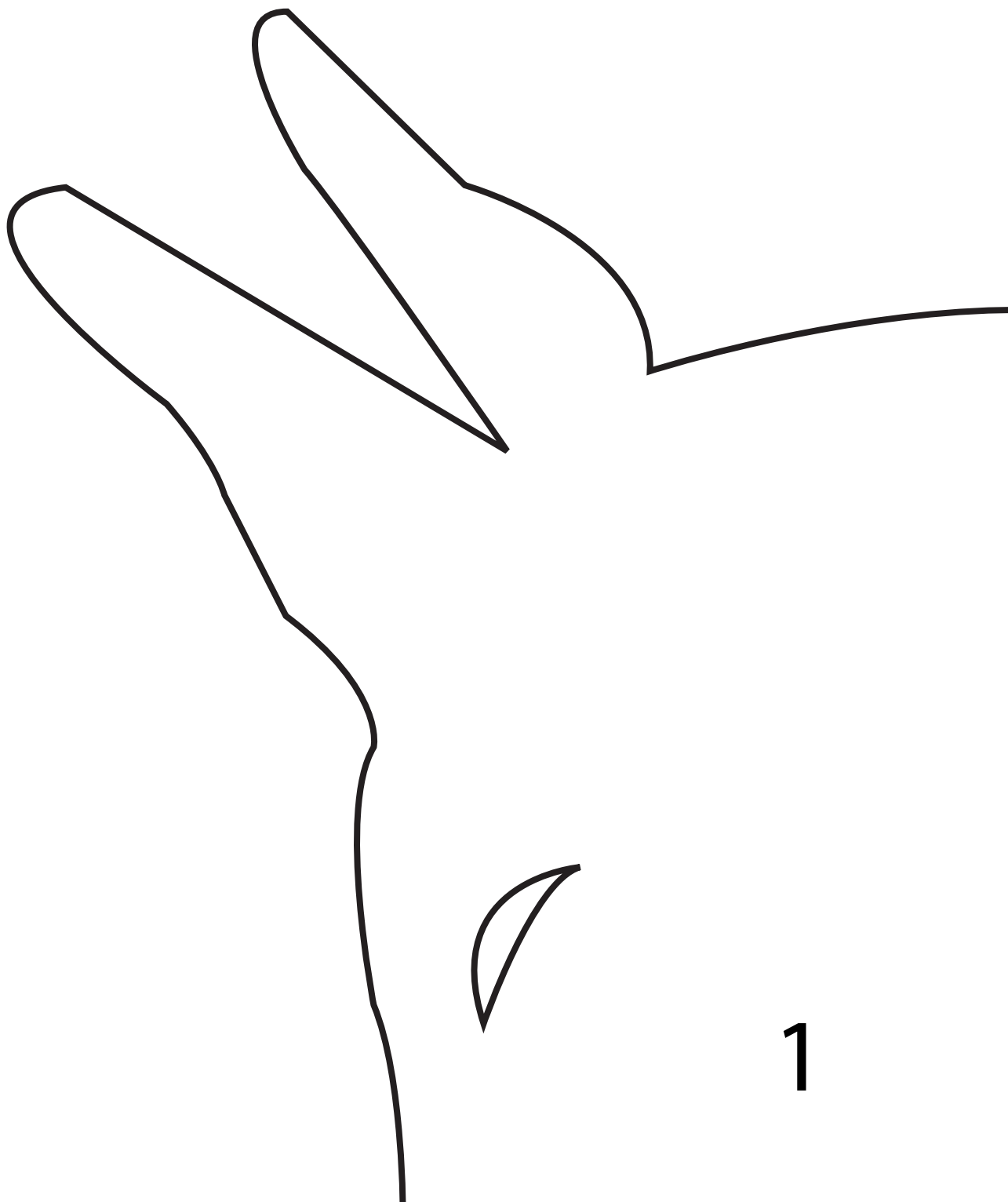
16



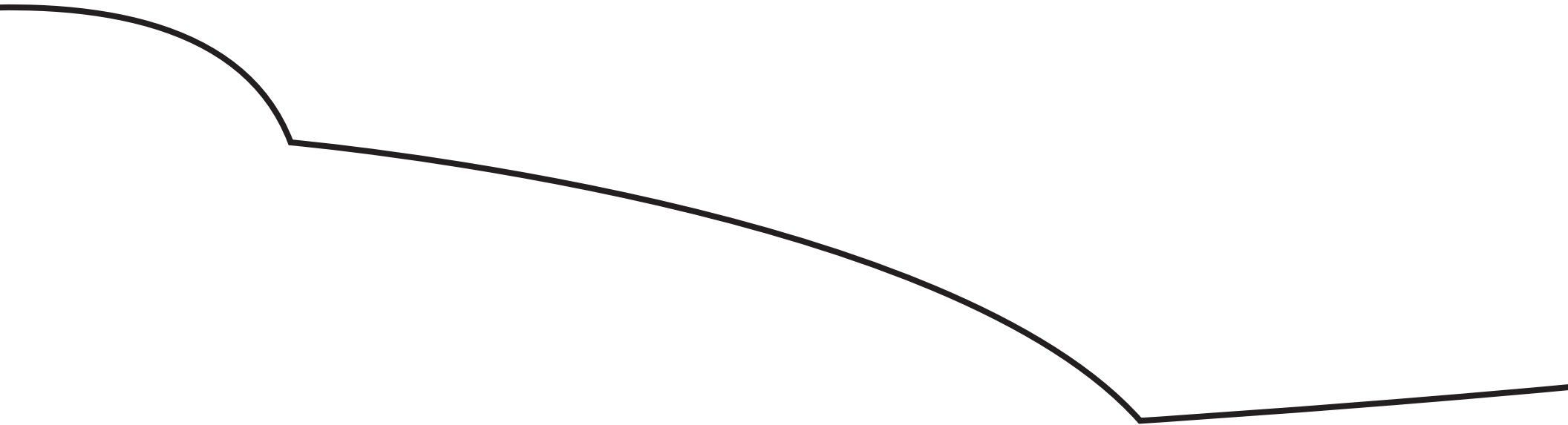


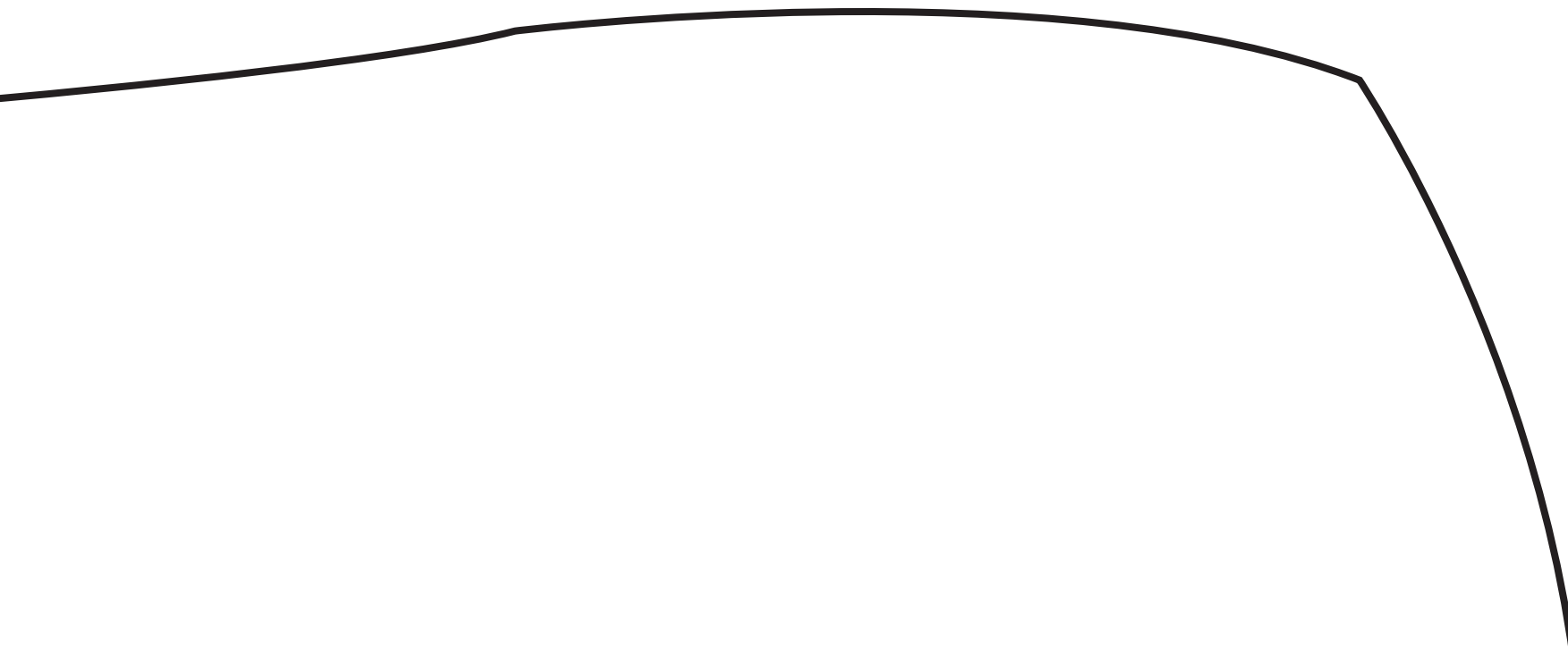


18



1

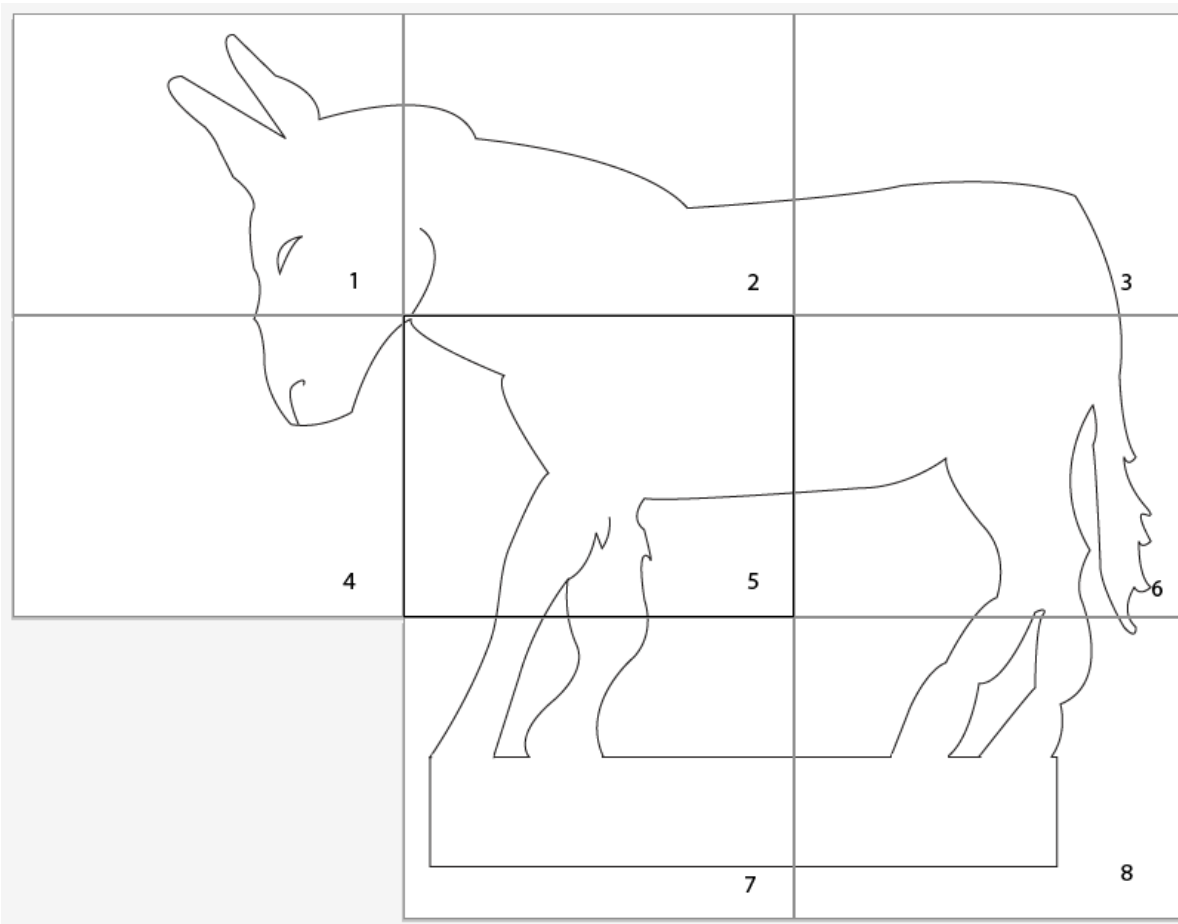


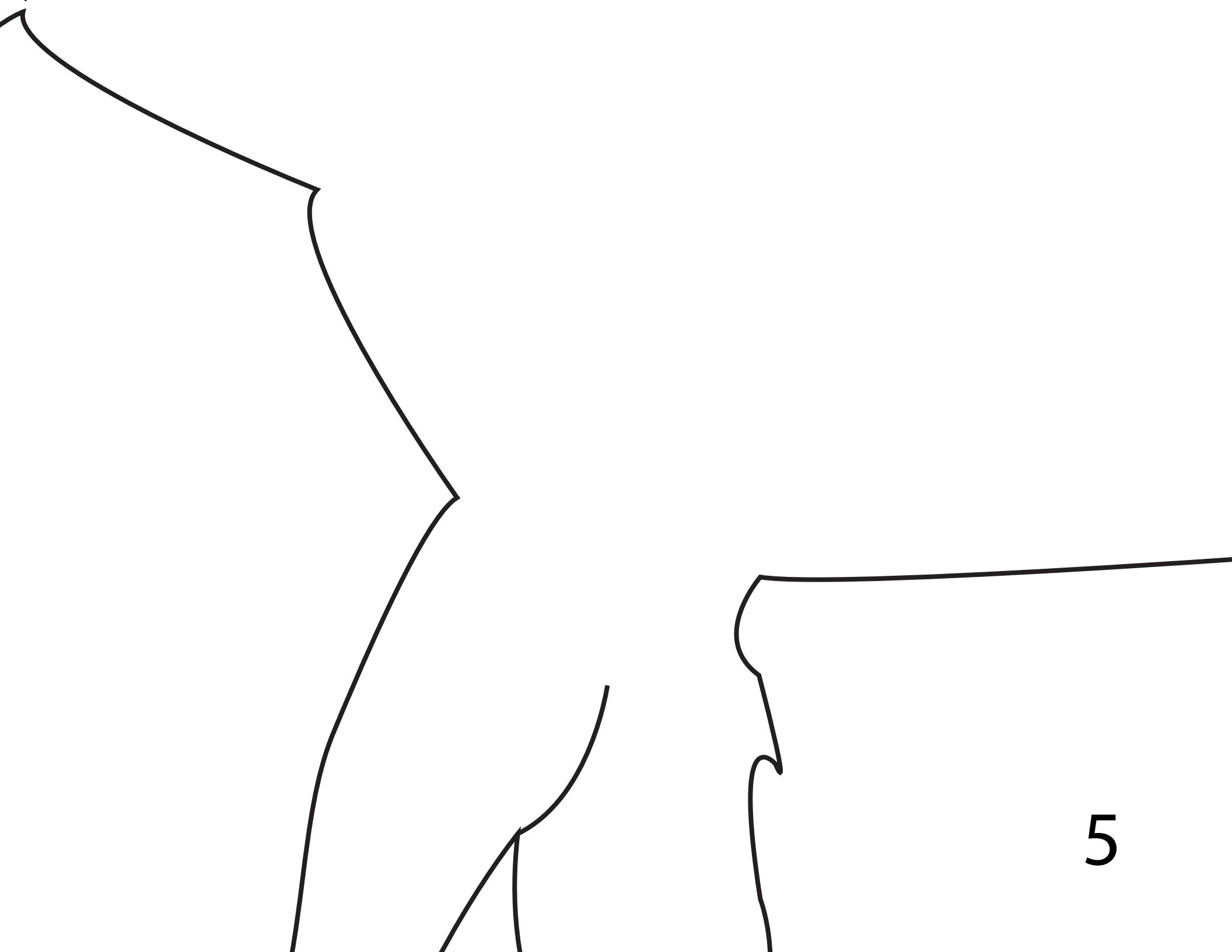


3

The donkey requires a 36" x 24" piece of plywood

Tape all the sheets together in number order using the below picture as your guide.
Do not overlap any of the pages.





5



6

